









An exceptional three bedroom mid terrace home, sympathetically modernised retaining a great deal of charm and character. Internally the stylish accommodation includes a superb reception hall with staircase to the first floor and two generous reception rooms. There is a fabulous modern fitted kitchen with a breakfast bar that opens in to a delightful conservatory. On the first floor there are three bedrooms, bathroom and a separate wc. A fixed staircase from the first floor landing leads up to an excellent loft space. Features of the property include gas central heating to radiators, double glazed windows and a wonderful courtyard to the rear. Situated within this ever popular area of High Barnes, the property is close to local amenities, shops and schools, including Barnes Infants as well as Sunderland Royal Hospital and there are excellent transport connections to surrounding areas. We highly advise viewing to appreciate this remarkable home.

MAIN ROOMS AND DIMENSIONS

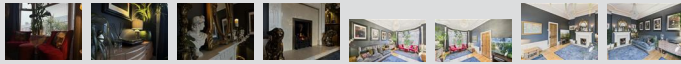
Ground Floor

Reception Hall



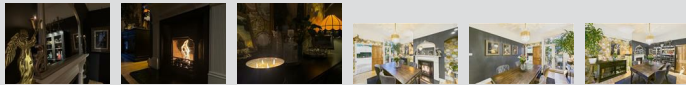
Radiator and stairs to first floor.

Lounge 16'7" x 11'6"



Double glazed bay window to front, feature fireplace and radiator.

Dining Room 16'8" x 10'7"



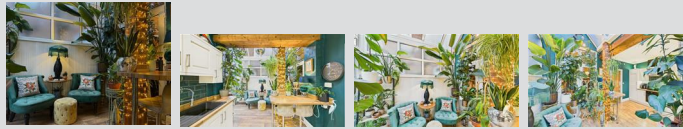
UPVC double glazed French doors to conservatory. Feature fireplace, radiator and walk in pantry cupboard. Door to kitchen.

Kitchen 9'10" x 15'8"



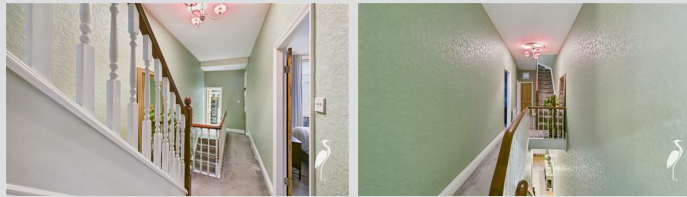
Wall and base units countertops over incorporating single bowl sink and drainer mixer tap. Integrated oven, electric hob and hood, fridge freezer and dishwasher. 2 seater breakfast bar. Open plan into conservatory.

Conservatory



Double glazed windows, UPVC French doors to rear and radiator.

First Floor Landing



Radiator, x2 storage cupboards and stairs continue up to second floor.

Bedroom 1 16'9" x 10'1"



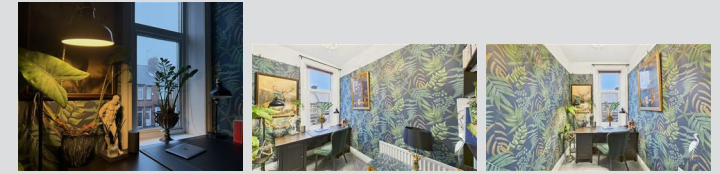
Double glazed window to rear and radiator.

Bedroom 2 15'7" x 9'7"



Double glazed window to front, feature fireplace and radiator.

Bedroom 3 10'4" x 6'3"



Double glazed window to front and radiator.

Bathroom



Washbasin and bath, radiator, storage cupboard and double glazed window to rear.

Separate WC



Low level WC.

Second Floor Landing

MAIN ROOMS AND DIMENSIONS

Loft Space 21'8" x 15'9"



2x Velux windows and radiator, currently used as additional bedroom and storage space.

Outside



Town garden to the front whilst to the rear a delightful low maintenance garden with gated access to the rear lane and an outhouse, currently used as a utility space.

Council Tax Band

The Council Tax Band is Band B.

Tenure Freehold

We are advised by the Vendors that the property is Freehold. Any prospective purchaser should clarify this with their Solicitor.

Important Notice - Particulars

Peter Heron Ltd for themselves and for the vendors of this property whose agents they are, give notice that:- The particulars are set out for general guidance only for the intending Purchasers and do not constitute part of an offer or contract. Whilst we endeavour to make our sales particulars accurate and reliable, if there is anything of particular importance which you feel may influence your decision to purchase, please contact the office and we will

be pleased to check the information. Do so particularly, if contemplating travelling some distance to view the property. All descriptions, dimensions, references to conditions and necessary permissions for use and occupation and other details are given in good faith, and are believed to be correct, however any intending purchasers should not rely on them that statements are representations of fact, but must satisfy themselves by inspection or otherwise as to the correctness of each of them. Independent property size verification is recommended.

Lease details, service charges and ground rent (where applicable) are given as a guide only and should be checked and confirmed by your Solicitor prior to exchange of contracts. No person in the employment of Peter Heron Ltd has any authority to make or give any representation or warranty whatever in relation to this property or these particulars, nor to enter into any contract on behalf of Peter Heron Ltd, nor into any contract on behalf of the Vendor. The copyright of all details and photographs remain exclusive to Peter Heron Ltd.

Please note that in the event the purchaser uses the services of Peter Heron Conveyancing in the purchase of their home, Peter Heron Ltd will be paid a completion commission of £300.00 by Movewithus Ltd.

Fawcett Street Viewings

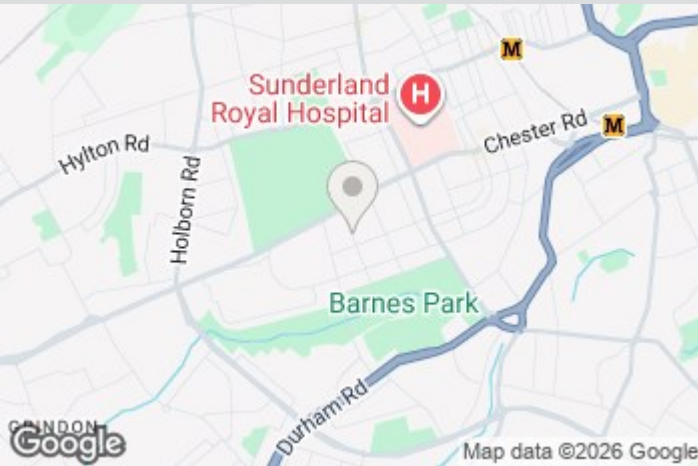
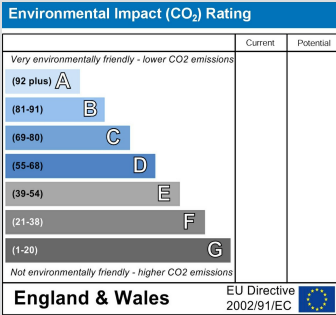
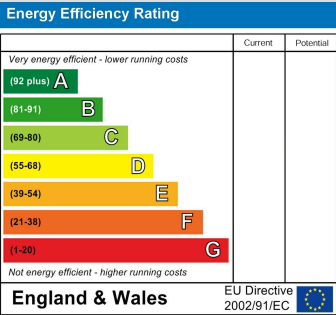
To arrange an appointment to view this property please contact our Fawcett Street branch on or book viewing online at peterheron.co.uk

Opening Times

Monday to Friday 9.00am - 5.00pm Saturday 9.00am - 12noon

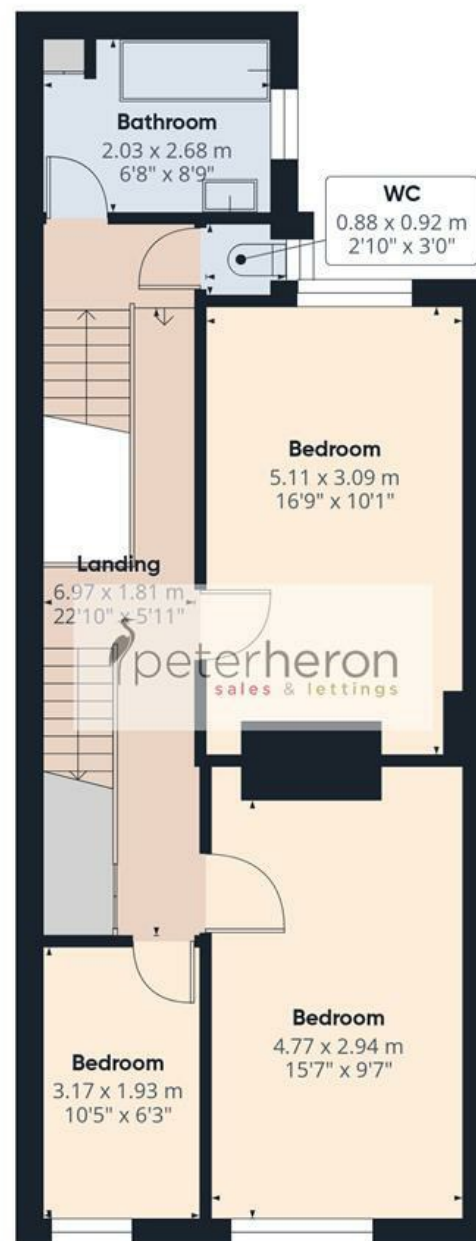
Ombudsman

Peter Heron Estate Agents are members of The Property Ombudsman and subscribe to The Property Ombudsman Code of Practice.



Visit www.peterheron.co.uk or call 0191 510 3323

Tried. Trusted. Recommended. City Branch 20 Fawcett Street Sunderland SR1 1RH Fulwell Branch 15 Sea Road Fulwell Sunderland SR6 9BS



Approximate total area⁽¹⁾

148.4 m²

1598 ft²

Reduced headroom

7.6 m²

82 ft²

(1) Excluding balconies and terraces

Reduced headroom

Below 1.5 m/5 ft

Calculations reference the RICS IPMS 3C standard. Measurements are approximate and not to scale. This floor plan is intended for illustration only.

GIRAFFE360